



Gatwick Airport Northern Runway Project

Environmental Statement

Appendix 8.10.1: Tree Survey Report and Arboricultural Impact Assessment – Part 3 – Tracked Version

Book 5

VERSION: 4.0

DATE: AUGUST 2024

Application Document Ref: 5.3

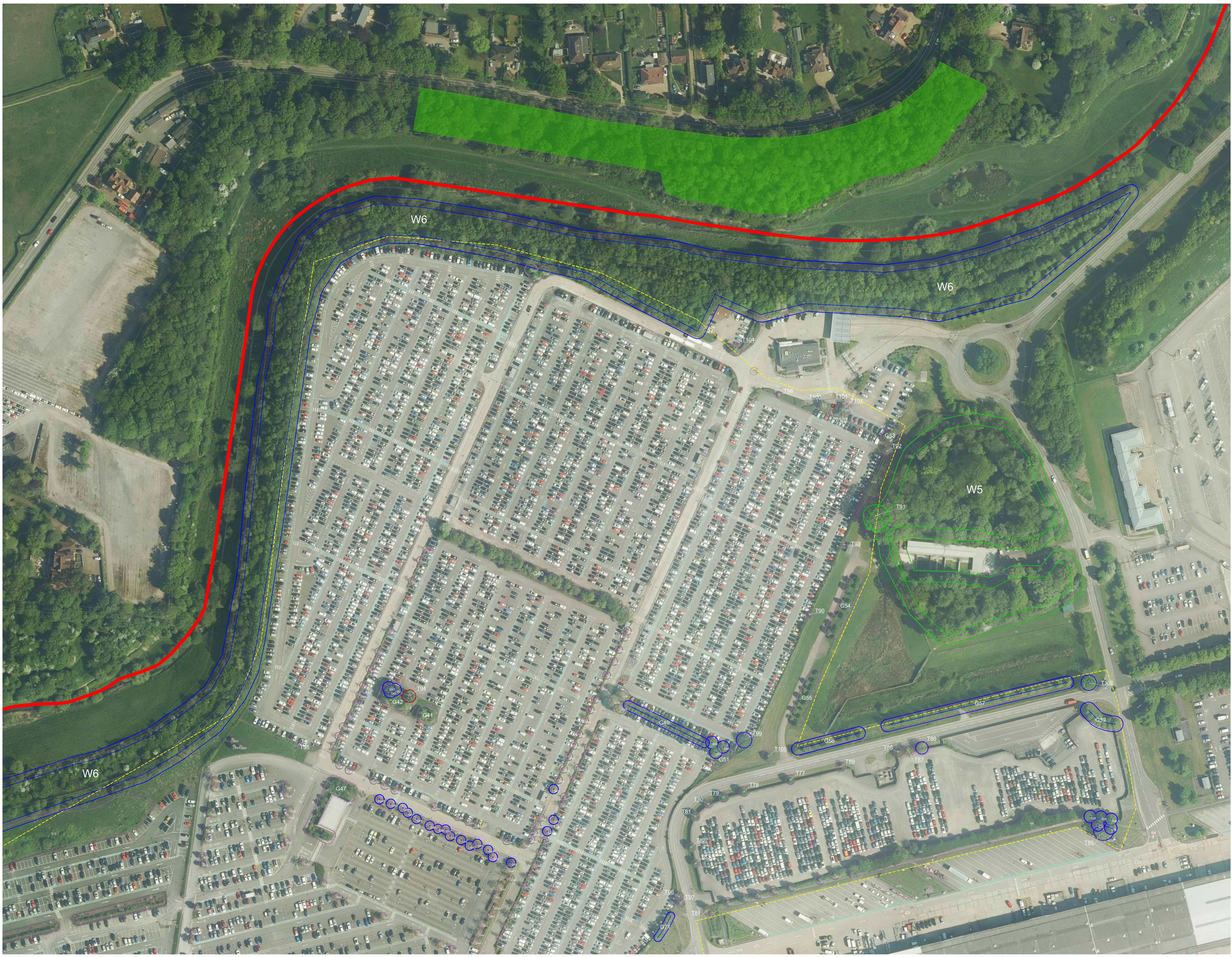
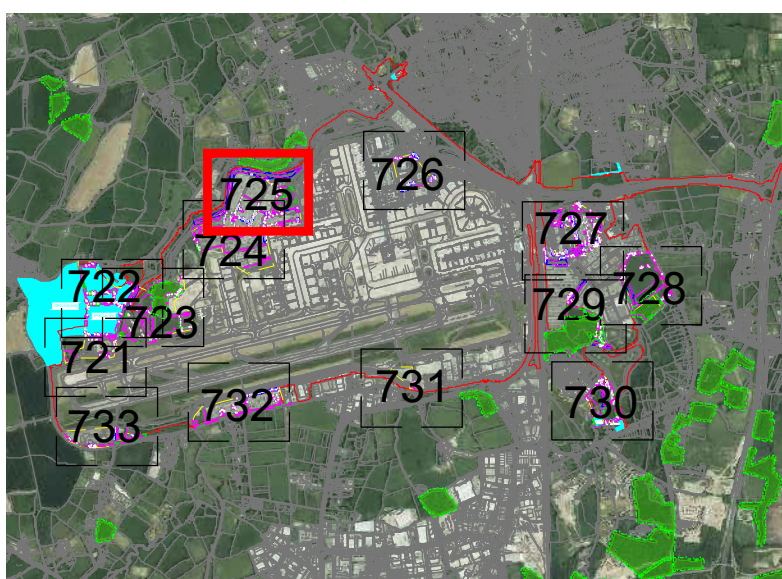
PINS Reference Number: TR020005

Key

- Site boundary.
 - Survey boundary.
 - Tree with numbered reference. Canopy spread and coloured BS5837:2012 tree quality category as shown below.
 - Tree details estimate (inaccessible tree)
 - Tree in off site location
 - G1 Tree group plotted with individual stem locations and numbered reference. Canopy extents coloured to match BS5837:2012 tree quality category as shown below and dashed line to show indicative stem line.
 - H1 Hedge with numbered reference. Canopy extents and coloured BS5837:2012 tree quality category as shown below and dashed line to show hedge centerline.
 - W1 Woodland with numbered reference. Canopy extents coloured to match BS5837:2012 tree quality category as shown below and dashed line to show indicative tree line.
- BS 5837:2012 Tree Quality Categories - Table 1
- Category A - High quality
 - Category B - Moderate quality
 - Category C - Low quality
 - Category U - Unsuitable for retention
- Direction of first significant branch
 - Root protection area (RPA). Calculated in accordance with Section 4.6 - BS5837:2012
 - Veteran tree buffer (15 x stem Ø) (as per standing advice produced by Forestry England and Natural England)
 - Tree protected by Tree Preservation Order. Bracketted number relates to the TPO reference.
 - Designated Ancient Woodland (as per Natural England ancient woodland inventory, via open data publication)
 - Ancient Woodland tree buffer (15m offset) (as per standing advice produced by Forestry England and Natural England)

- NOTES:
- Refer to ES Appendix 8.10.1, Tree Survey Report and Arboricultural Impact Assessment for further details.
 - Survey based on a visual inspection from the ground and is not intended as a full arboricultural inspection.
 - Plan produced in accordance with recommendations set out in BS 5837:2012, 'Trees in Relation to design, demolition and construction'.
 - Survey based upon Aerial Photography and trees located by eye.

Key Plan



DOCUMENT

Environmental Statement

DRAWING TITLE

Airport Tree Survey Plans
Appendix 8.10.1
Sheet 5 of 13

DATE: August 2024

ORIENTATION	DRAWING NO.	REVISION
N	725	For ES Issue
	DRAWN BY	PM / CHECKED BY
	RC	DC

SCALE @ A0
0m 25m 50m



Key

- Site boundary.
- Survey boundary.
- Tree with numbered reference. Canopy spread and coloured BS5837:2012 tree quality category as shown below.
 - Tree details estimate (inaccessible tree)
 - Tree in off site location
- Tree group plotted with individual stem locations and numbered reference. Canopy extents coloured to match BS5837:2012 tree quality category as shown below and dashed line to show indicative stem line.
- Hedge with numbered reference. Canopy extents coloured to match BS5837:2012 tree quality category as shown below and dashed line to show hedge centreline.
- Woodland with numbered reference. Canopy extents coloured to match BS5837:2012 tree quality category as shown below and dashed line to show indicative tree line.

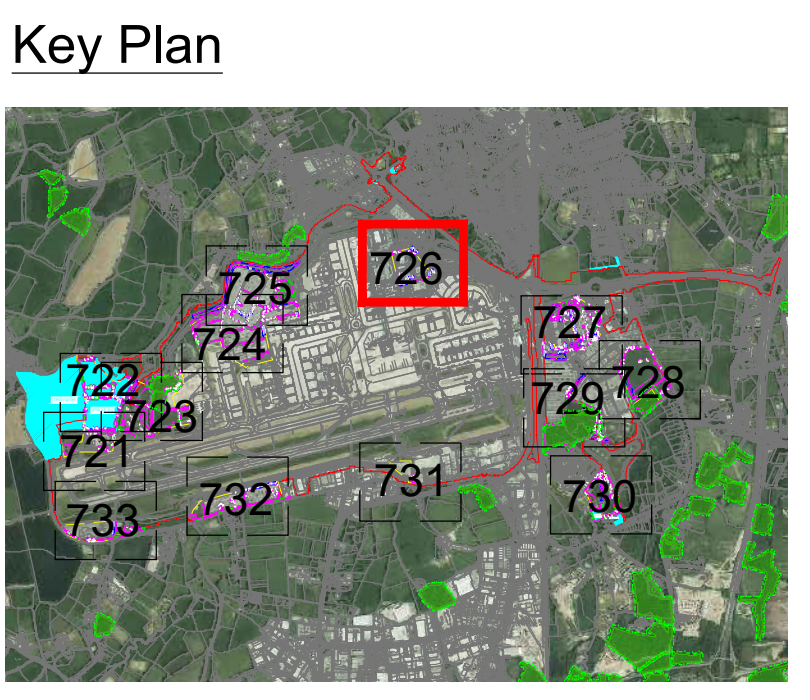
BS 5837:2012 Tree Quality Categories - Table 1

- Category A - High quality
- Category B - Moderate quality
- Category C - Low quality
- Category U - Unsuitable for retention

- Direction of first significant branch
- Root protection area (RPA). Calculated in accordance with Section 4.6 - BS5837:2012
- Veteran tree buffer (15 x stem Ø) (as per standing advice produced by Forestry England and Natural England)
- Tree protected by Tree Preservation Order. Bracketted number relates to the TPO reference.
- Designated Ancient Woodland (as per Natural England ancient woodland inventory, via open data publication)
- Ancient Woodland tree buffer (15m offset) (as per standing advice produced by Forestry England and Natural England)

NOTES:

- Refer to ES Appendix 8.10.1. Tree Survey Report and Arboricultural Impact Assessment for further details.
- Survey based on a visual inspection from the ground and is not intended as a full arboricultural inspection.
- Plan produced in accordance with recommendations set out in BS 5837:2012 - 'Trees in Relation to design, demolition and construction'.
- Survey based upon Aerial Photography and trees located by eye.



DOCUMENT

Environmental Statement

DRAWING TITLE

**Airport Tree Survey Plans
Appendix 8.10.1
Sheet 6 of 13**

DATE

August 2024

ORIENTATION	DRAWING NO.	REVISION
N 	726	For ES Issue
	DRAWN BY RC	PM / CHECKED BY DC

SCALE @ A0

0m 25m 50m

Reproduced from Ordnance Survey map with the permission of Ordnance Survey on behalf of the controller of Her Majesty's Stationery Office © Crown Copyright (2023). License number 010031673, 1000198, 10004892.
© Copyright 2023 Gatwick Airport Limited. No part of this drawing is to be reproduced without prior permission of Gatwick Airport Limited.



Key

- Site boundary.
- Survey boundary.
- Tree with numbered reference. Canopy spread and coloured BS5837:2012 tree quality category as shown below.
 - Tree details estimate (inaccessible tree)
 - Tree in off site location
- G1 Tree group plotted with individual stem locations and numbered reference. Canopy extents coloured to match BS5837:2012 tree quality category as shown below and dashed line to show indicative stem line.
- H1 Hedge with numbered reference. Canopy extents coloured to match BS5837:2012 tree quality category as shown below and dashed line to show hedge centreline.
- W1 Woodland with numbered reference. Canopy extents coloured to match BS5837:2012 tree quality category as shown below and dashed line to show indicative tree line.

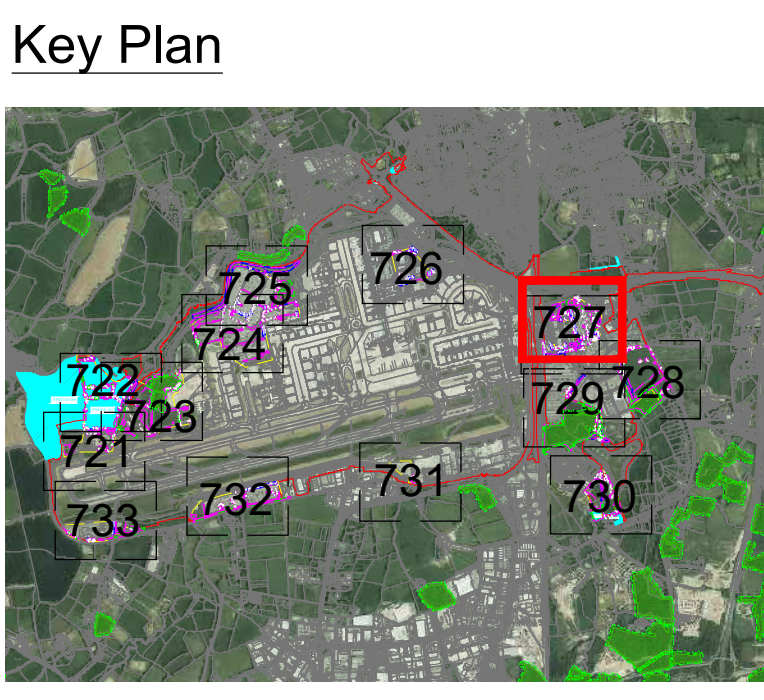
BS 5837:2012 Tree Quality Categories - Table 1

- Category A - High quality
- Category B - Moderate quality
- Category C - Low quality
- Category U - Unsuitable for retention

- Direction of first significant branch
- Root protection area (RPA). Calculated in accordance with Section 4.6 - BS5837:2012
- Veteran tree buffer (15 x stem Ø) (as per standing advice produced by Forestry England and Natural England)
- Tree protected by Tree Preservation Order. Bracketed number relates to the TPO reference.
- Designated Ancient Woodland (as per Natural England ancient woodland inventory, via open data publication)
- Ancient Woodland tree buffer (15m offset) (as per standing advice produced by Forestry England and Natural England)

NOTES:

- Refer to ES Appendix 8.10.1. Tree Survey Report and Arboricultural Impact Assessment for further details.
- Survey based on a visual inspection from the ground and is not intended as a full arboricultural inspection.
- Plan produced in accordance with recommendations set out in BS 5837:2012. Trees in Relation to design, demolition and construction.
- Survey based upon Aerial Photography and trees located by eye.



DOCUMENT

Environmental Statement

DRAWING TITLE

Airport Tree Survey Plans
Appendix 8.10.1
Sheet 7 of 13

DATE **August 2024**

ORIENTATION	DRAWING NO.	REVISION
N	727	For ES Issue
	RC	PM / CHECKED BY DC

SCALE @ A0

Reproduced from Ordnance Survey map with the permission of Ordnance Survey on behalf of the controller of Her Majesty's Stationery Office © Crown Copyright (2023). License number 010031673, 1000198, 100048492.

© Copyright 2023 Gatwick Airport Limited. No part of this drawing is to be reproduced without prior permission of Gatwick Airport Limited.

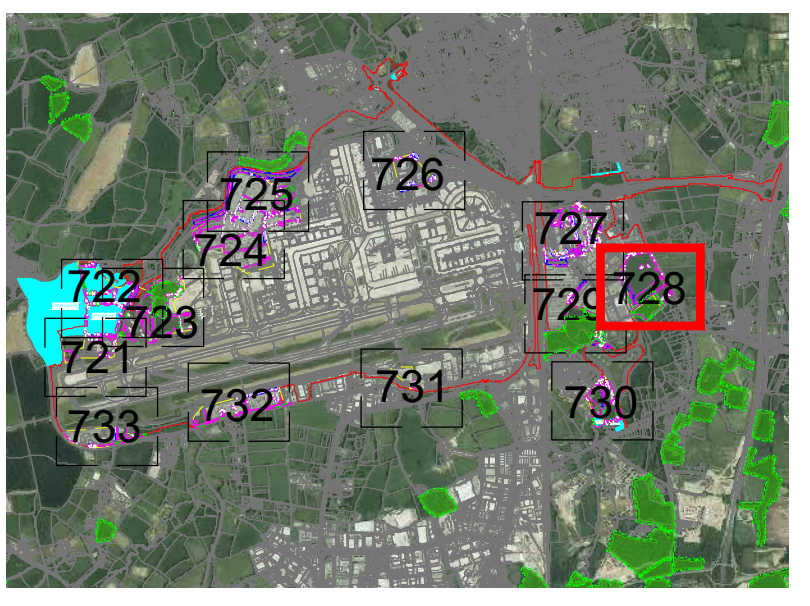


Key

- Site boundary.
 - Survey boundary.
 - Tree with numbered reference. Canopy spread and coloured BS5837:2012 tree quality category as shown below.
 - Tree details estimate (inaccessible tree)
 - Tree in off site location
 - Tree group plotted with individual stem locations and numbered reference. Canopy extents coloured to match BS5837:2012 tree quality category as shown below.
 - Tree or Vegetation group with numbered reference. Canopy extents coloured to match BS5837:2012 tree quality category as shown below and dashed line to show indicative stem line.
 - Hedge with numbered reference. Canopy extents and coloured BS5837:2012 tree quality category as shown below and dashed line to show hedge centerline.
 - Woodland with numbered reference. Canopy extents coloured to match BS5837:2012 tree quality category as shown below and dashed line to show indicative tree line.
- BS 5837:2012 Tree Quality Categories - Table 1**
- Category A - High quality
 - Category B - Moderate quality
 - Category C - Low quality
 - Category U - Unsuitable for retention
- Direction of first significant branch
 - Root protection area (RPA). Calculated in accordance with Section 4.6 - BS5837:2012
 - Veteran tree buffer (15 x stem Ø) (as per standing advice produced by Forestry England and Natural England)
 - Tree protected by Tree Preservation Order. Bracketed number relates to the TPO reference.
 - Designated Ancient Woodland (as per Natural England ancient woodland inventory, via open data publication)
 - Ancient Woodland tree buffer (15m offset) (as per standing advice produced by Forestry England and Natural England)

- NOTES:**
- Refer to ES Appendix 8.10.1, Tree Survey Report and Arboricultural Impact Assessment for further details.
 - Survey based on a visual inspection from the ground and is not intended as a full arboricultural inspection.
 - Plan produced in accordance with recommendations set out in BS 5837:2012, 'Trees in Relation to design, demolition and construction'.
 - Survey based upon Aerial Photography and trees located by eye.

Key Plan



DOCUMENT

Environmental Statement

DRAWING TITLE

**Airport Tree Survey Plans
Appendix 8.10.1
Sheet 8 of 13**

DATE

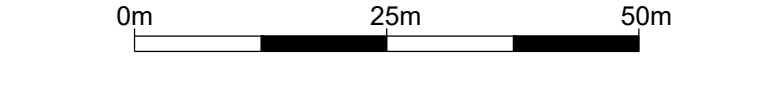
August 2024

ORIENTATION



DRAWING NO.	REVISION
728	For ES Issue
DRAWN BY RC	PM / CHECKED BY DC

SCALE @ A0



Reproduced from Ordnance Survey map with the permission of Ordnance Survey on behalf of the controller of Her Majesty's Stationery Office © Crown Copyright (2023). License number 0100031673, 10001998, 100048492.
© Copyright 2023 Gatwick Airport Limited. No part of this drawing is to be reproduced without prior permission of Gatwick Airport Limited.



Key

- Site boundary.
- Survey boundary.
- Tree with numbered reference. Canopy spread and coloured BS5837:2012 tree quality category as shown below.
 - Tree details estimate (inaccessible tree)
 - Tree in off site location
- Tree group plotted with individual stem locations and numbered reference. Canopy extents coloured to match BS5837:2012 tree quality category as shown below and dashed line to show indicative stem line.
- Hedge with numbered reference. Canopy extents coloured to match BS5837:2012 tree quality category as shown below and dashed line to show hedge centerline.
- Woodland with numbered reference. Canopy extents coloured to match BS5837:2012 tree quality category as shown below and dashed line to show indicative tree line.

BS 5837:2012 Tree Quality Categories - Table 1

- Category A - High quality
- Category B - Moderate quality
- Category C - Low quality
- Category U - Unsuitable for retention

Direction of first significant branch

Root protection area (RPA) Calculated in accordance with Section 4.6 - BS5837:2012

Veteran tree buffer (15 x stem Ø) (as per standing advice produced by Forestry England and Natural England)

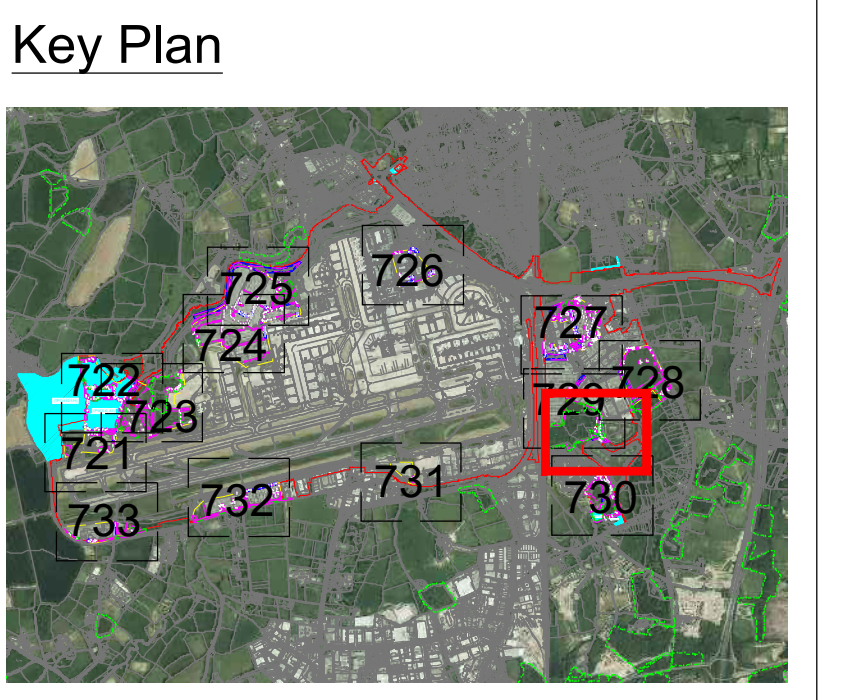
Tree protected by Tree Preservation Order. Bracketted number relates to the TPO reference.

Designated Ancient Woodland (as per Natural England ancient woodland inventory, via open data publication)

Ancient Woodland tree buffer (15m offset) (as per standing advice produced by Forestry England and Natural England)

NOTES:

- Refer to ES Appendix 8.10.1, Tree Survey Report and Arboricultural Impact Assessment for further details.
- Survey based on a visual inspection from the ground and is not intended as a full arboricultural inspection.
- Plan produced in accordance with recommendations set out in BS 5837:2012, 'Trees in Relation to design, demolition and construction'.
- Survey based upon Aerial Photography and trees located by eye.



DOCUMENT

Environmental Statement

DRAWING TITLE

**Airport Tree Survey Plans
Appendix 8.10.1
Sheet 9 of 13**

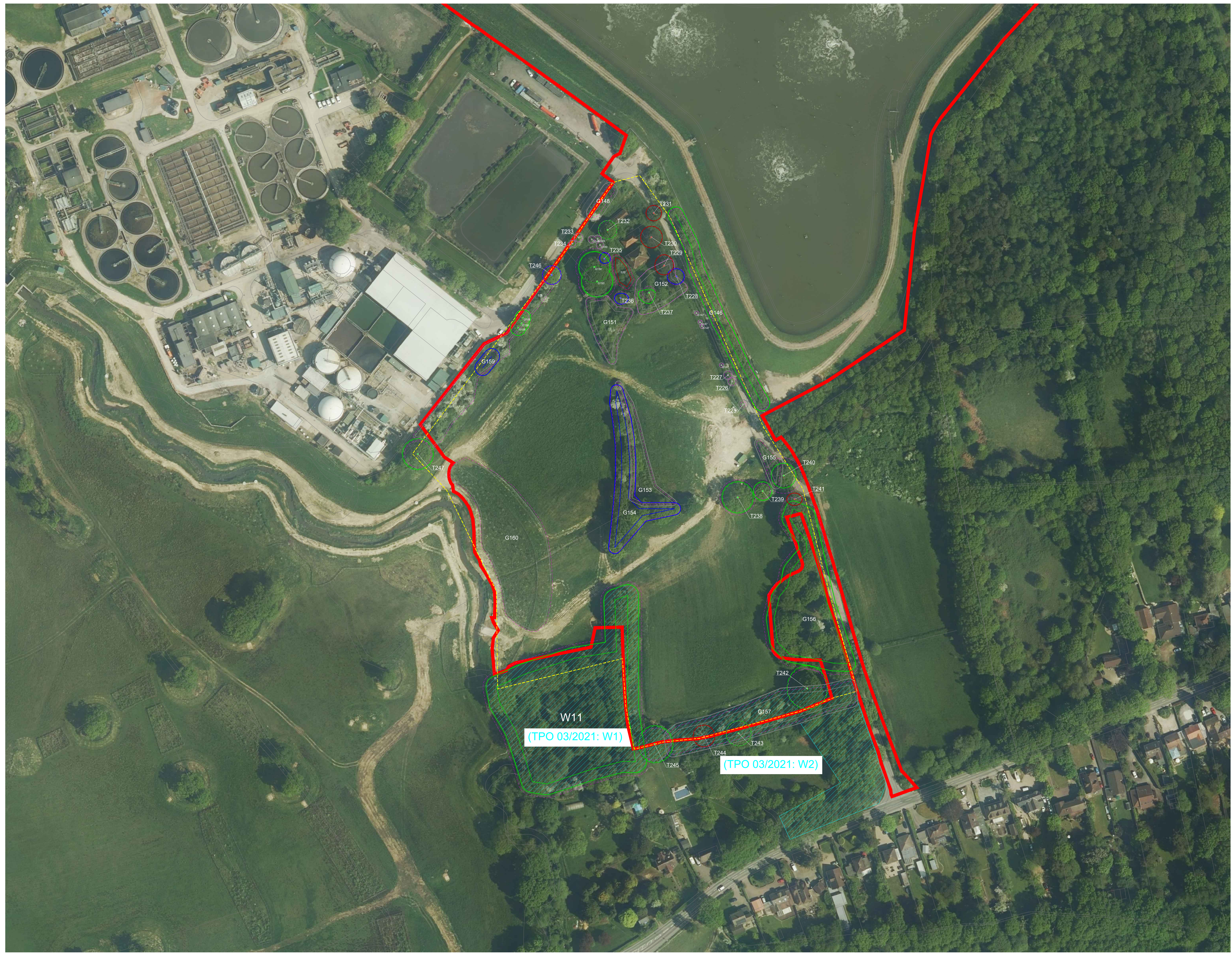
DATE **August 2024**

ORIENTATION	DRAWING NO.	REVISION
	DRAWN BY	PM / CHECKED BY
N		RC
DC		

SCALE @ A0

Reproduced from Ordnance Survey map with the permission of Ordnance Survey on behalf of the controller of Her Majesty's Stationery Office. © Crown Copyright (2023). License number 6100031673, 10001998, 100048492.

© Copyright 2023 Gatwick Airport Limited. No part of this drawing is to be reproduced without prior permission of Gatwick Airport Limited.



Key

- Site boundary.
- Survey boundary.
- Tree with numbered reference. Canopy spread and coloured BS5837:2012 tree quality category as shown below.
 - Tree details estimate (inaccessible tree)
 - Tree in off site location
- Tree group plotted with individual stem locations and numbered reference. Canopy extents coloured to match BS5837:2012 tree quality category as shown below.
- Tree or Vegetation group with numbered reference. Canopy extents coloured to match BS5837:2012 tree quality category as shown below and dashed line to show indicative stem line.
- Hedge with numbered reference. Canopy extents coloured to match BS5837:2012 tree quality category as shown below and dashed line to show hedge centerline.
- Woodland with numbered reference. Canopy extents coloured to match BS5837:2012 tree quality category as shown below and dashed line to show indicative tree line.

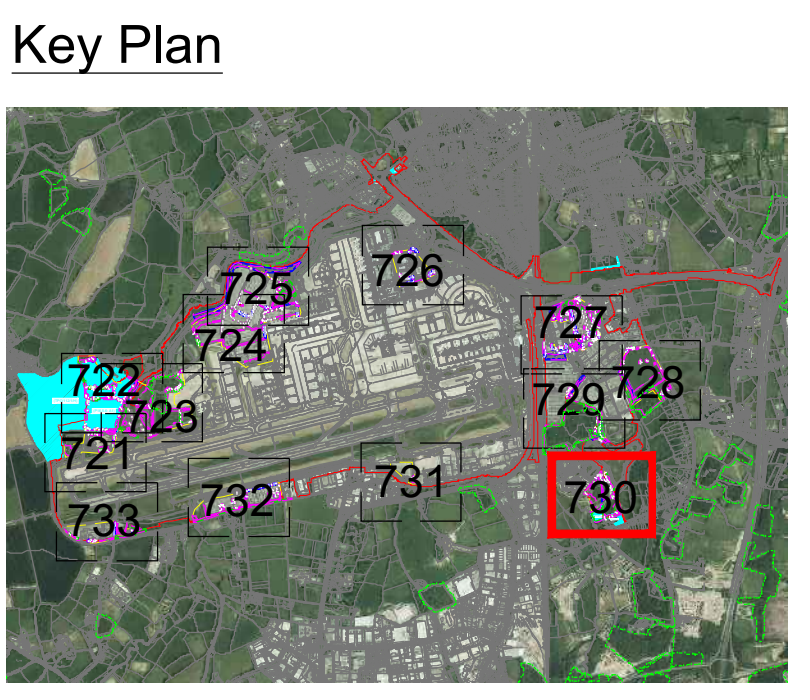
BS 5837:2012 Tree Quality Categories - Table 1

- Category A - High quality
- Category B - Moderate quality
- Category C - Low quality
- Category U - Unsuitable for retention

- Direction of first significant branch
- Root protection area (RPA) Calculated in accordance with Section 4.6 - BS5837:2012
- Veteran tree buffer (15 x stem Ø) (as per standing advice produced by Forestry England and Natural England)
- Tree protected by Tree Preservation Order. Bracketted number relates to the TPO reference.
- Designated Ancient Woodland (as per Natural England ancient woodland inventory, via open data publication)
- Ancient Woodland tree buffer (15m offset) (as per standing advice produced by Forestry England and Natural England)

NOTES:

- Refer to ES Appendix 8.10.1, Tree Survey Report and Arboricultural Impact Assessment for further details.
- Survey based on a visual inspection from the ground and is not intended as a full arboricultural inspection.
- Plan produced in accordance with recommendations set out in BS 5837:2012, 'Trees in Relation to design, demolition and construction'.
- Survey based upon Aerial Photography and trees located by eye.



DOCUMENT

Environmental Statement

DRAWING TITLE

**Airport Tree Survey Plans
Appendix 8.10.1
Sheet 10 of 13**

DATE

August 2024

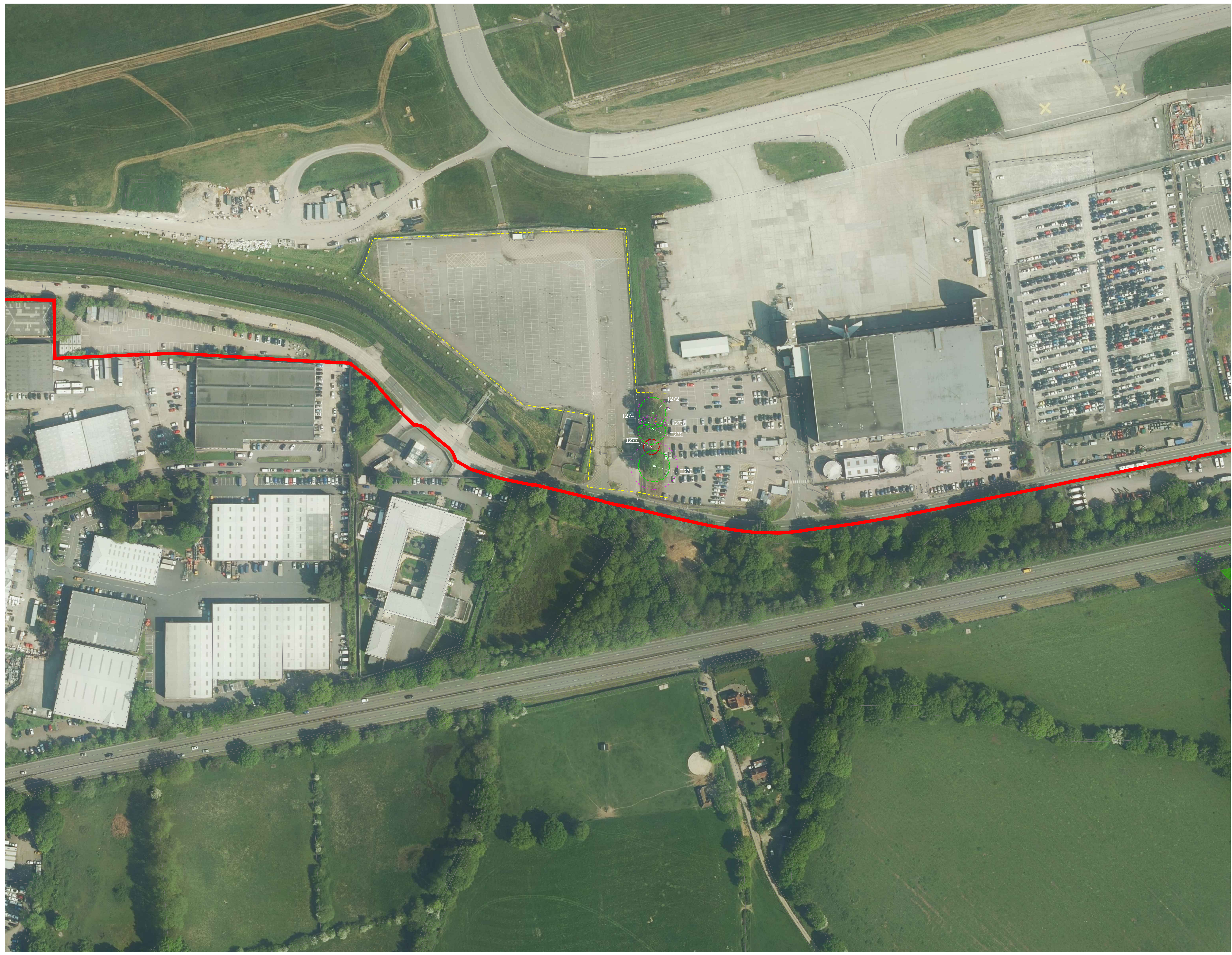
ORIENTATION	DRAWING NO.	REVISION
N	730	For ES Issue
	DRAWN BY	PM / CHECKED BY
	RC	DC

SCALE @ A0

0m 25m 50m

Reproduced from Ordnance Survey map with the permission of Ordnance Survey on behalf of the controller of Her Majesty's Stationery Office © Crown Copyright (2023). License number 6100031673, 10004998, 10004992.

© Copyright 2023 Gatwick Airport Limited. No part of this drawing is to be reproduced without prior permission of Gatwick Airport Limited.



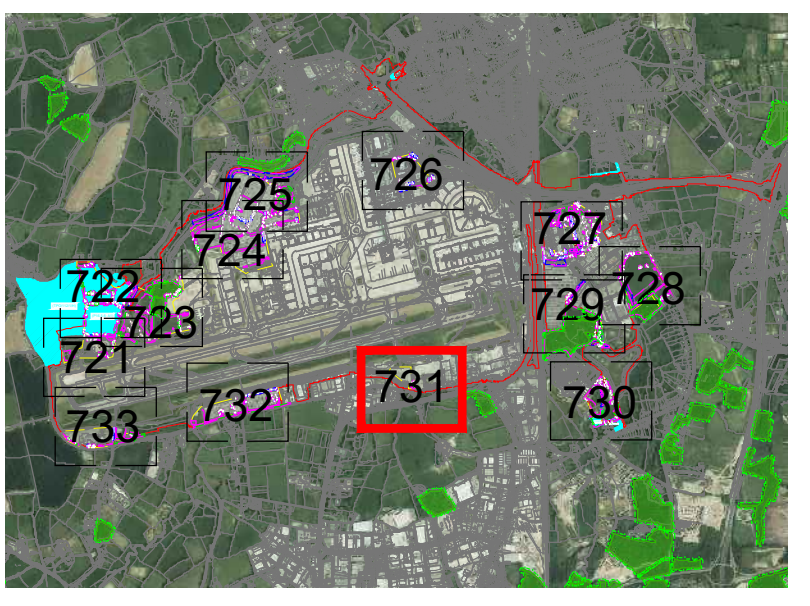
Key

- Site boundary.
 - Survey boundary.
 - Tree with numbered reference. Canopy spread and coloured BS5837:2012 tree quality category as shown below.
 - = Tree details estimate (inaccessible tree)
 - = Tree in off site location
 - Tree group plotted with individual stem locations and numbered reference. Canopy extents coloured to match BS5837:2012 tree quality category as shown below and dashed line to show indicative stem line.
 - Hedge with numbered reference. Canopy extents coloured to match BS5837:2012 tree quality category as shown below and dashed line to show hedge centerline.
 - Woodland with numbered reference. Canopy extents coloured to match BS5837:2012 tree quality category as shown below and dashed line to show indicative tree line.
- BS 5837:2012 Tree Quality Categories - Table 1**
- Category A - High quality
 - Category B - Moderate quality
 - Category C - Low quality
 - Category U - Unsuitable for retention
- Direction of first significant branch
 - Root protection area (RPA). Calculated in accordance with Section 4.6 - BS5837:2012
 - Veteran tree buffer (15 x stem Ø) (as per standing advice produced by Forestry England and Natural England)
 - Tree protected by Tree Preservation Order. Bracketted number relates to the TPO reference.
 - Designated Ancient Woodland (as per Natural England ancient woodland inventory, via open data publication)
 - Ancient Woodland tree buffer (15m offset) (as per standing advice produced by Forestry England and Natural England)

NOTES:

- Refer to ES Appendix 8.10.1. Tree Survey Report and Arboricultural Impact Assessment for further details.
- Survey based on a visual inspection from the ground and is not intended as a full arboricultural inspection.
- Plan produced in accordance with recommendations set out in BS 5837:2012. 'Trees in Relation to design, demolition and construction'.
- Survey based upon Aerial Photography and trees located by eye.

Key Plan



DOCUMENT

Environmental Statement

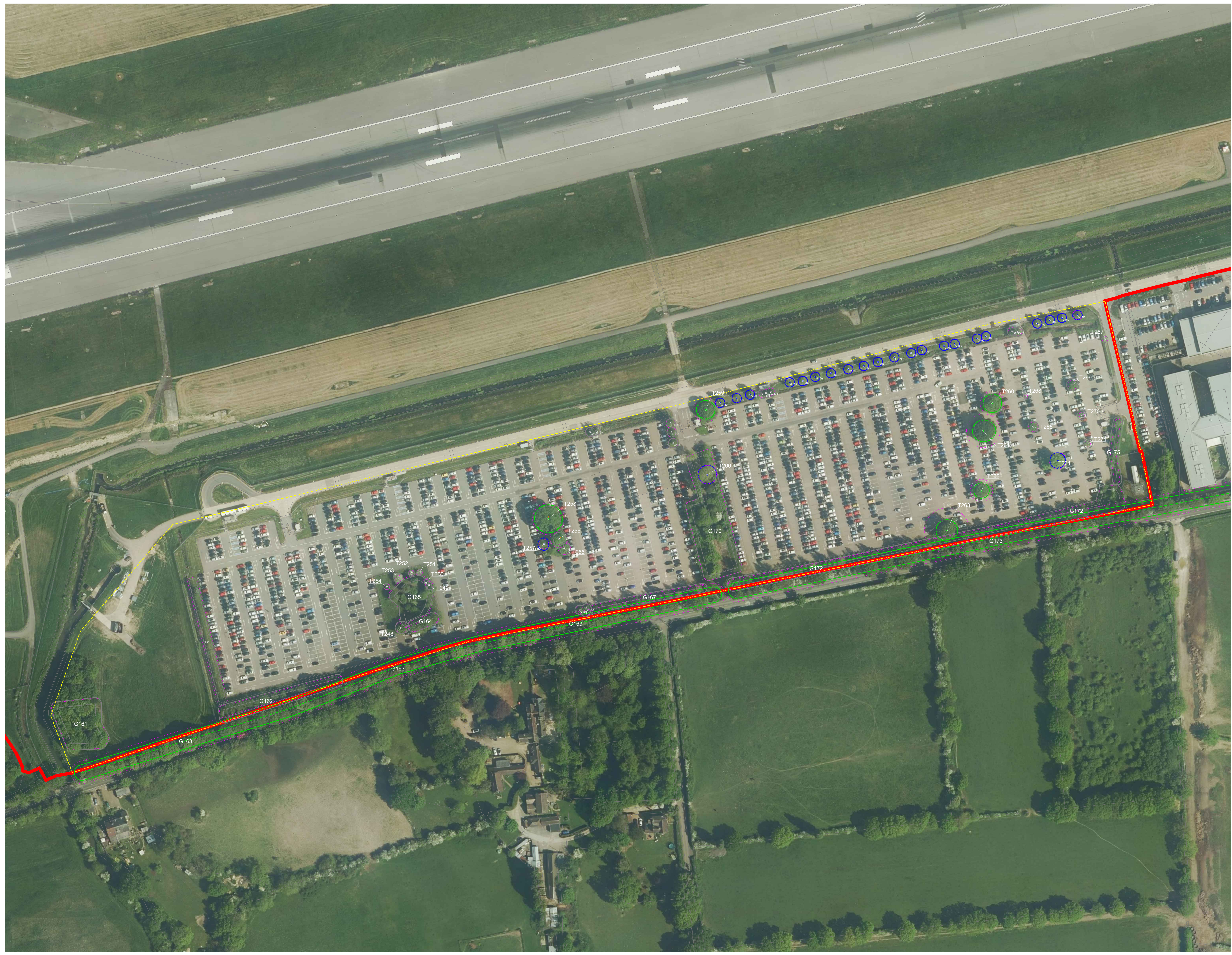
DRAWING TITLE

**Airport Tree Survey Plans
Appendix 8.10.1
Sheet 11 of 13**

DATE
August 2024

ORIENTATION	DRAWING NO.	REVISION
N ▲	731	For ES Issue
	DRAWN BY RC	PM / CHECKED BY DC

SCALE @ A0
0m 25m 50m



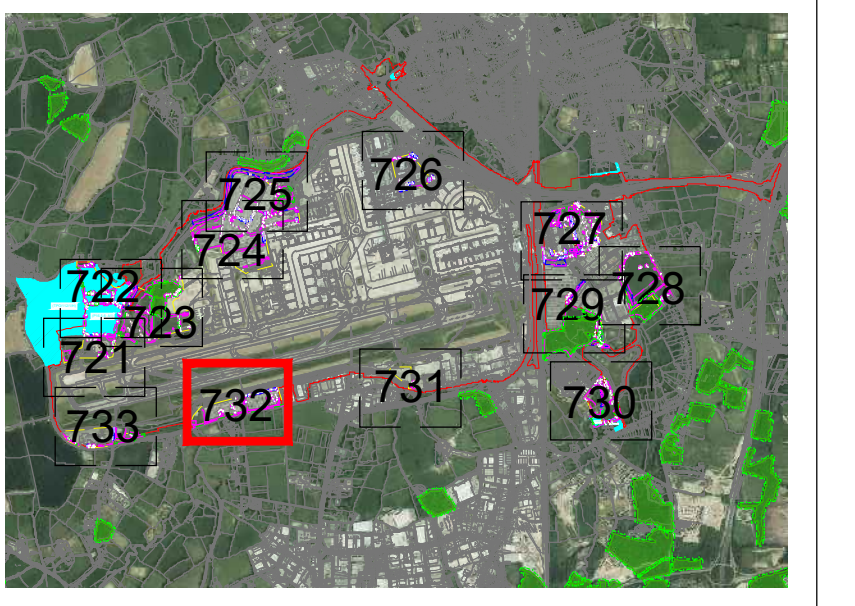
Key

- Site boundary.
 - Survey boundary.
 - Tree with numbered reference. Canopy spread and coloured BS5837:2012 tree quality category as shown below.
 - = Tree details estimate (accessible tree)
 - = Tree in off site location
 - Tree group plotted with individual stem locations and numbered reference. Canopy extents coloured to match BS5837:2012 tree quality category as shown below.
 - Tree or Vegetation group with numbered reference. Canopy extents coloured to match BS5837:2012 tree quality category as shown below and dashed line to show indicative stem line.
 - Hedge with numbered reference. Canopy extents and coloured BS5837:2012 tree quality category as shown below and dashed line to show hedge centerline.
 - Woodland with numbered reference. Canopy extents coloured to match BS5837:2012 tree quality category as shown below and dashed line to show indicative tree line.
- BS 5837:2012 Tree Quality Categories - Table 1**
- Category A - High quality
 - Category B - Moderate quality
 - Category C - Low quality
 - Category U - Unsuitable for retention
- Direction of first significant branch
 - Root protection area (RPA) Calculated in accordance with Section 4.6 - BS5837:2012
 - Veteran tree buffer (15 x stem Ø) (as per standing advice produced by Forestry England and Natural England)
 - Tree protected by Tree Preservation Order. Bracketed number relates to the TPO reference.
 - Designated Ancient Woodland (as per Natural England ancient woodland inventory, via open data publication)
 - Ancient Woodland tree buffer (15m offset) (as per standing advice produced by Forestry England and Natural England)

NOTES:

- Refer to ES Appendix 8.10.1. Tree Survey Report and Arboricultural Impact Assessment for further details.
- Survey based on a visual inspection from the ground and is not intended as a full arboricultural inspection.
- Plan produced in accordance with recommendations set out in BS 5837:2012 - 'Trees in Relation to Design, Demolition and Construction'.
- Survey based upon Aerial Photography and trees located by eye.

Key Plan

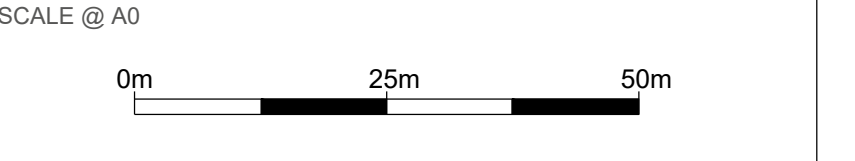


DOCUMENT
Environmental Statement

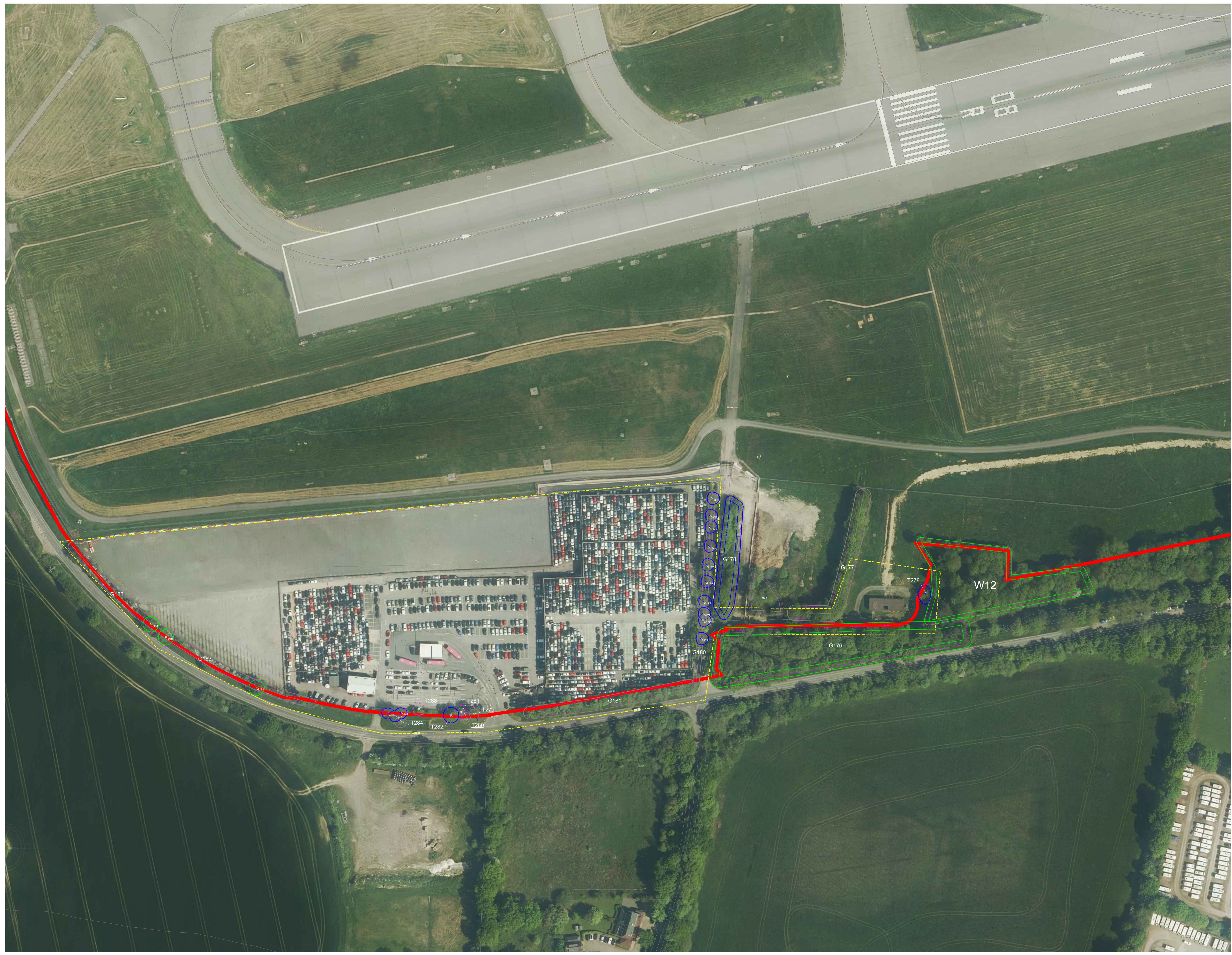
DRAWING TITLE
**Airport Tree Survey Plans
Appendix 8.10.1
Sheet 12 of 13**

DATE
August 2024

ORIENTATION 	DRAWING NO. 732	REVISION For ES Issue
	DRAWN BY RC	PM / CHECKED BY DC



Reproduced from Ordnance Survey map with the permission of Ordnance Survey on behalf of the controller of Her Majesty's Stationery Office © Crown Copyright (2023). License number 0100031673, 10001998, 100048492.
© Copyright 2023 Gatwick Airport Limited. No part of this drawing is to be reproduced without prior permission of Gatwick Airport Limited.



Key

- Site boundary.
- Survey boundary.
- Tree with numbered reference. Canopy spread and coloured BS5837:2012 tree quality category as shown below.
 - = Tree details estimate (inaccessible tree)
 - = Tree in off site location
- Tree group plotted with individual stem locations and numbered reference. Canopy extents coloured to match BS5837:2012 tree quality category as shown below.
- Tree or Vegetation group with numbered reference. Canopy extents coloured to match BS5837:2012 tree quality category as shown below and dashed line to show indicative stem line.
- Hedge with numbered reference. Canopy extents and coloured BS5837:2012 tree quality category as shown below and dashed line to show hedge centerline.
- Woodland with numbered reference. Canopy extents coloured to match BS5837:2012 tree quality category as shown below and dashed line to show indicative tree line.

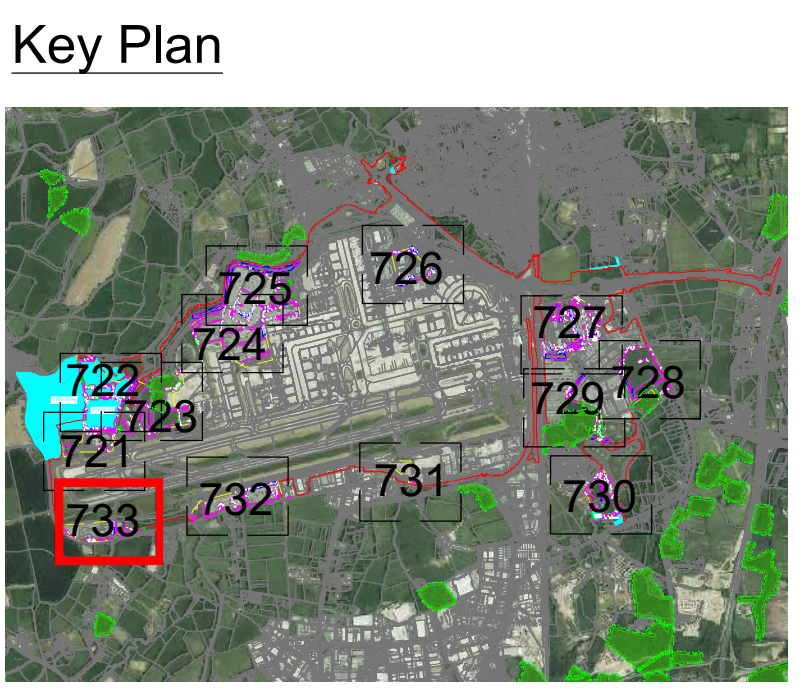
BS 5837:2012 Tree Quality Categories - Table 1

- Category A - High quality
- Category B - Moderate quality
- Category C - Low quality
- Category U - Unsuitable for retention

- Direction of first significant branch
- Root protection area (RPA). Calculated in accordance with Section 4.6 - BS5837:2012
- Veteran tree buffer (15 x stem Ø) (as per standing advice produced by Forestry England and Natural England)
- Tree protected by Tree Preservation Order. Bracketed number relates to the TPO reference.
- Designated Ancient Woodland (as per Natural England ancient woodland inventory, via open data publication)
- Ancient Woodland tree buffer (15m offset) (as per standing advice produced by Forestry England and Natural England)

NOTES:

- Refer to ES Appendix 8.10.1. Tree Survey Report and Arboricultural Impact Assessment for further details.
- Survey based on a visual inspection from the ground and is not intended as a full arboricultural inspection.
- Plan produced in accordance with recommendations set out in BS 5837:2012 - 'Trees in Relation to design, demolition and construction'.
- Survey based upon Aerial Photography and trees located by eye.



DOCUMENT

Environmental Statement

DRAWING TITLE

Airport Tree Survey Plans
Appendix 8.10.1
Sheet 13 of 13

DATE

August 2024

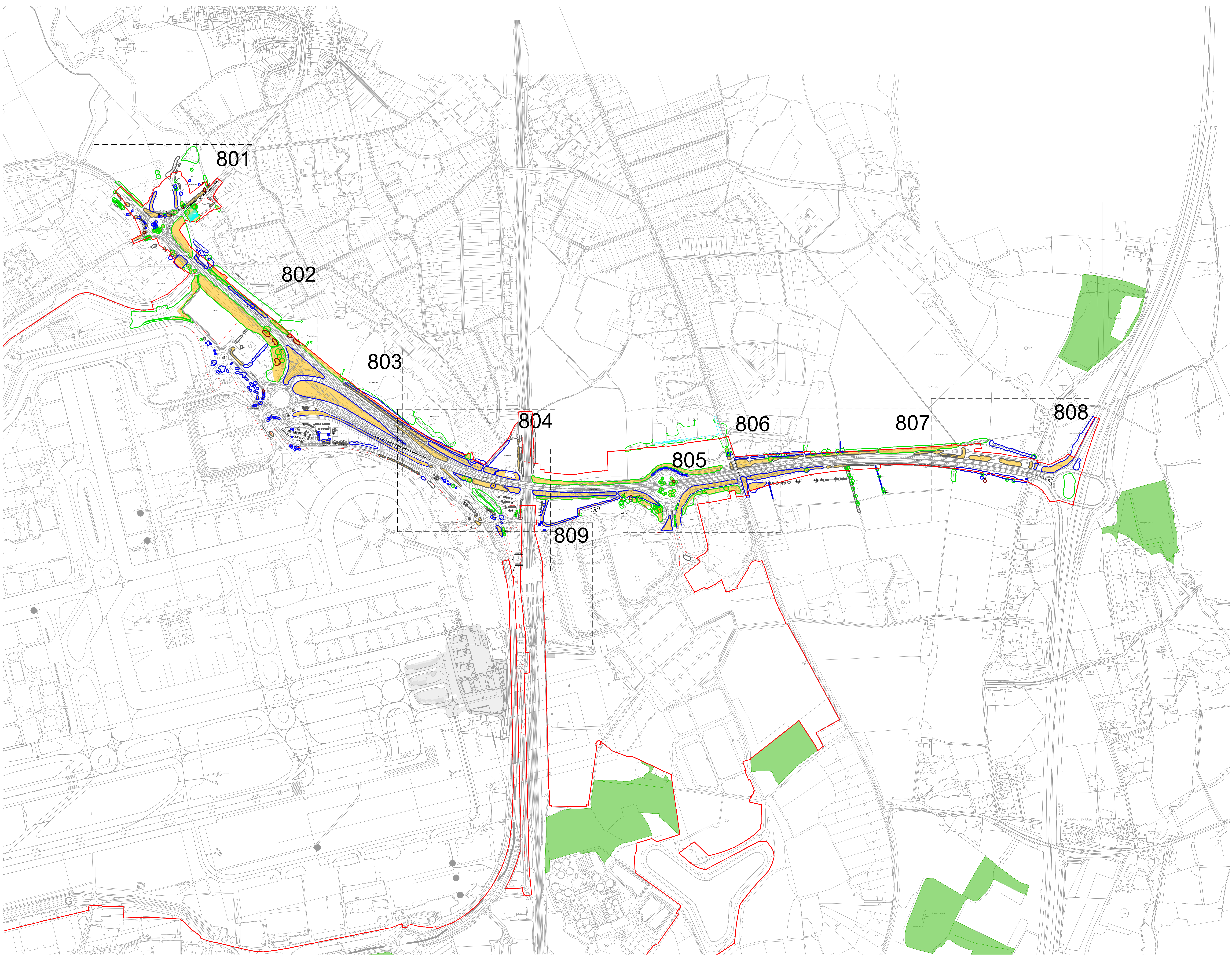
 N	DRAWING NO. 733	REVISION For ES Issue
	DRAWN BY RC	PM / CHECKED BY DC

SCALE @ A0

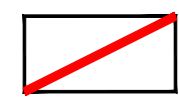
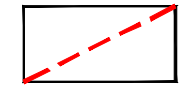


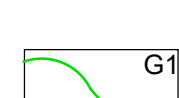
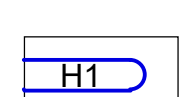

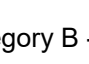
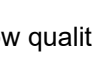
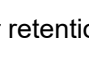
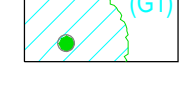
0m 25m 50m

Reproduced from Ordnance Survey map with the permission of Ordnance Survey on behalf of the controller of Her Majesty's Stationery Office © Crown Copyright (2023). License number 0100031673, 10001998, 100048492.
© Copyright 2023 Gatwick Airport Limited. No part of this drawing is to be reproduced without prior permission of Gatwick Airport Limited.

Appendix H
M23 & A23 Preliminary Tree Removal Plans



Key

-  Site Boundary
-  Survey Boundary / Boundary of M23/A23 construction activity
-  Projected Tree loss required for construction (Worst Case Scenario)
-  Tree with numbered reference. Canopy spread and coloured BS5837:2012 tree quality category as shown below.
 # = Tree details estimate (inaccessible tree)
 * = Tree in off site location
-  G1 Vegetation group with numbered reference. Canopy extents and BS5837:2012 tree quality category as shown below.
-  H1 Hedge with numbered reference. Width and BS5837:2012 tree quality category as shown below.
- BS 5837:2012 Tree Quality Categories - Table 1**
-  Category A - High quality
-  Category B - Moderate quality
-  Category C - Low quality
-  Category U - Unsuitable for retention
-  Tree protected by Tree Preservation Order. Bracketted number relates to the TPO reference.

NOTE:

• Refer to ES Appendix 8.10.1: Tree Survey Report and Arboricultural Impact Assessment for further details.

DOCUMENT

Environmental Statement

DRAWING TITLE

M23 & A23 Preliminary Tree Removal Plans
Appendix 8.10.1
Overview

DATE

August 2024

ORIENTATION



DRAWING NO.

800

REVISION

For ES Issue

DRAWN BY

RC

PM / CHECKED BY

DC

SCALE @ A0

Custom Scale

Reproduced from Ordnance Survey map with the permission of Ordnance Survey on behalf of the controller of Her Majesty's Stationery Office
© Crown Copyright (2023). License number 6100031673, 10004892,
10004892.
© Copyright 2023 Gatwick Airport Limited. No part of this drawing is to be reproduced without prior permission of Gatwick Airport Limited.